

*GTtrading*

STEG



Italy

**CATALOG**

# HISTORY

At the end of the eighties, Tiziano Giacomoni, a young and dynamic enthusiast of the audio sector, founded the company G.T. Electronics, devoting itself to the construction of audio amplifiers for automotive use and marketing its products under the brands AUDIOSYSTEM and AUDIOQUEEST. In a few years, the first results, allow the growth and optimization of the company, which strengthens and matures both in the ability to research and to produce and distribute its products. The continuous goals achieved, exhort the creativity of the design staff and create the strength to conquer land in a sector of clear oriental domination. Since then, products have been created on products with increasingly sought-after circuitry and aesthetics, with the common goal of the result without compromises. In 1994 a second company was born: the G.T. Trading, which is entrusted with the task of marketing the product all over the world, where the G.T. Electronics further develops its potential in production, design and research departments. In 1995, an important event marked the path of the two companies: the collaboration with Bartolomeo Aloia, which unquestionably represents the greatest exponent of Italian Home Hi-Fi. The ability acquired by the G.T. in the creation of innovative products, it comes into synergy with the knowledge and experience of the engineer Aloia, giving life to a new research study aimed at the creation of brand new Italian Hi-End products, able to compete at the highest world levels. The results are now under everyone's eyes: after two years of tireless research, the ALOIA amplifiers and preamplifiers are born, characterized by the inductive power supply that significantly improves the sound capacity, while for the production of the Car products, the effect of the collaboration begins in 1997 with the Steg appliances. From the fine line of SL amplifiers to the recent 11 Qualitymos models, today the G.T. produces and distributes its electronics all over the world, also commercializing historic brands like CerwinVega in Italy! and SEAS, investing continuously in planning and research. The goals follow each other year after year and the Master Stroke series confirms this: the new reference for the world car hi-end market, MSK3000 (the most powerful amplifier built in Italy), supported by the MSK1500 and the recent MSK50SC (50Wx2 @ 4ohm able to multiply the power up to 700Wx2 @ 0.25 ohms!). 2007, history seems to repeat itself. Except for Siliato, a young and dynamic enthusiast of the audio sector, he joined the GT Trading group, from there, year after year, joined by the staff GT Trading strengthens and matures his knowledge on the construction of audio amplifiers for automotive use. In 2010 Salvo Siliato became the owner of the company, thus continuing the legend of GT Trading. The new D Class line confirms the ability of the new G.T. group, with twenty years of experience in the audio industry, fully stabilized class D amplifiers capable of delivering 5000Watt with distortion of less than 0.05%. Demonstrations of a continuous commitment, of objectives placed further ahead ...

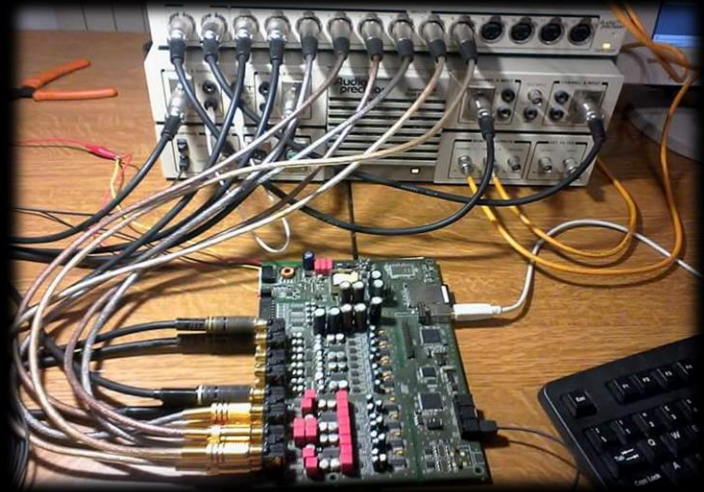
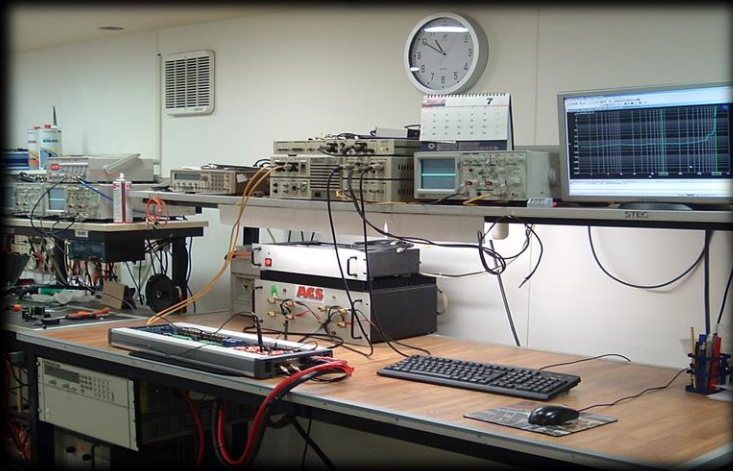
# THE COMPANY

OVER 2,000 SQUARE METERS ON TWO LEVELS TO PRODUCE GTTRADING PRODUCTS, WITH INPRIMIS THE GOAL OF 100% ITALIAN QUALITY. FROM THE ASSEMBLY OF THE SMD COMPONENTS WITH 5 MACHINES THAT WORK DAY AND NIGHT TO THE WAVE WELDING MACHINE FOR THE ASSEMBLY OF TRADITIONAL COMPONENTS MAINTAINING VERY HIGH QUALITY STANDARDS SUCH AS ISO9001 WITH THE USE OF ONLY ROHS COMPONENTS, THE PRE-TEST OF THE CARDS UP TO THE FINAL TEST TO REDUCE TO ZERO THE MALFUNCTIONS DUE TO THE COMPONENTS OR THE ASSEMBLY OF THE PARTS, SO THAT OUR CUSTOMERS HAVE THE CERTAINTY OF HAVING A PRODUCT WITHOUT FACTORY DEFECTS.



# RESEARCH AND DEVELOPMENT

GTTrading boasts about 100 square meters dedicated to research and development, over 6 designers, audio, mechanics and software to create cutting-edge devices, bringing in the world technology and solutions for the HI-FI market, thus being able to compete with global multinationals. The group of designers within the company has more than 30 years in the design of high fidelity audio devices.



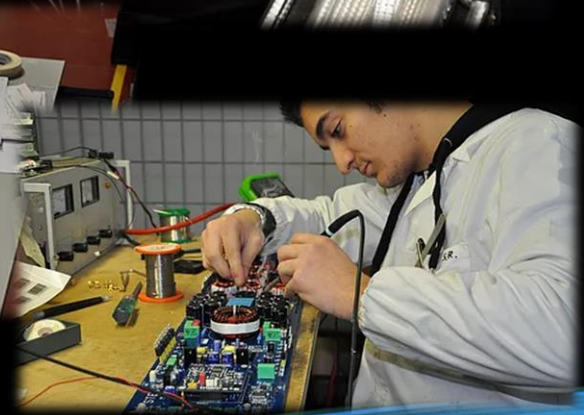
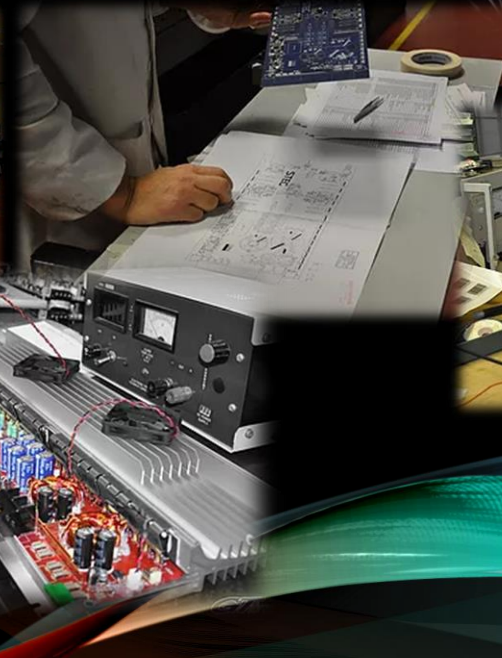
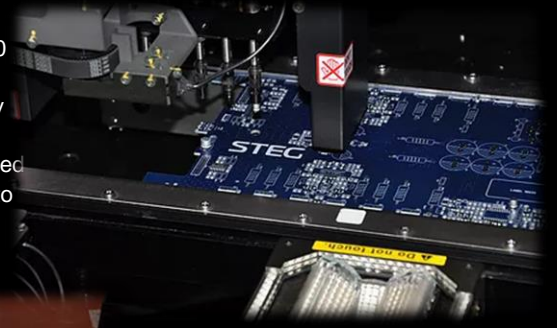
**steg**<sup>®</sup>  
car audio concept

*GTTrading*



# PRODUCTION

We start from the empty PCB (without components) to go to the SMD assembly where almost 300sqm of machines have been dedicated only for the assembly of them able to produce 1000 circuits a day, maintaining very high quality standards such as ISO9001, with the use of components exclusively ROHS. Since the 80s the GT for each amplifier produced applied very strict tests, called " burnin ". In order to do this, the test benches have always been designed within the company to make thermal protection (about 90 ° on the heatsink) every amp produced and able to test every single problem that could occur after the connection in the car. Thanks to this procedure in the final assembly phase we can significantly reduce the warranty returns, ensuring quality and reliability tagged 100% made in Italy.



# THE COMPANY IN THE WORLD



GTTrading boasts more than 60 distributors all over the world, including Asia, America, Europe, South Africa, Oceania, Middle East, Southeast Asia



Thanks to an excellent personal and technical relationship with the biggest distributors between China Russia and America, GTTrading is able to develop all the car audio equipment necessary for the world market bringing 100% made in Italy technology and design.



Thanks to the unquestioned quality, STEG and Audiosystem products are the industry leader in the world. They are distributed in over 50 countries around the world, bringing design and technology without compromise. Constant updating courses on the installation to the best of our products allow you to achieve excellent results in the field of competition and allow you to satisfy even the most demanding customers.

# MASTER STROKE LINE



The Master Stroke amplifiers reveal the synthesis of ten-year research applied to audiophilia, with passion and rigor the GTTrading group has concretized the precious collaborations that took place with the major exponents of Italian high fidelity and Steg has once again signed the milestone of amplification for mobile use. With the development of the Master Strokes we have defined the new terms of comparison: these electronic show unprecedented qualities in terms of beauty of Sound, Power and Solidity. No compromise! Every constructive detail corresponds to the scrupulous verification of complex projects, refined to perfection. Master Stroke revolutionizes every notion acquired on high fidelity in cars and the limits that were believed to be immutable move disproportionately forward, moving beyond what, until today, was believed impossible ...



**CLASSE A**



**MSK 1500**



**MSK 3000**

## GTTRADING DATA

	<b>MSK CLASSE A</b>	<b>MSK1500</b>	<b>MSK3000</b>
WATT RMS @ 4 Ohm Stereo	100 x 2 – 50 x 2 in Classe A	200 x 2	400 x 2
WATT RMS @ 2 Ohm Stereo	200 x 2	400 x 2	800 x 2
WATT RMS @ 4 Ohm Bridged Mono		800 x 1	1600 x 1
WATT RMS @ 2 Ohm Bridged Mono		1500 x 1	3000 x 1
DIMENSIONS	466 x 60 x 255 mm	466 x 60 x 255 mm	620 x 60 x 255 mm
WEIGHT	7 kG	7,4 Kg	9,5 Kg



# MASTER STROKE CLASSE A



MASTERSTROKE "CLASSE A" is the most advanced in today's world of high-end car amplification. It embodies the goals of STEG research in the combination of innovative technologies, which operate effectively and in absolute balance. The "CLASS A" uses circuit solutions such as the absence of feedback Negative and operating class A, techniques that can only be traced back to Home Hi-Fi. It introduces a surprising tuning tool, able to refine the sound of the amplifier following the sensitivity of the audiophile. Built in the state of the art, the "CLASS A" is expressed in the most beautiful sound of car-audio. Consistency of timbre, sweetness and three-dimensionality of the sound scene, give an enchanting listening involvement, demonstrating the complete and unaltered reproduction of the original musical message. **ABSENCE OF NEGATIVE BACKGROUND** The amplification stages are extremely articulated electronic circuits, the interaction between the components combined with their physical / technological limits and the complexity of the signal are among the many variables that contribute to producing undesirable effects on the functioning of the system. The design of an amplifier, already in itself challenging, is complicated when dealing with audio signals: the incoming music information must remain unaltered throughout the process, to re-propose complete with every micro information on the amplified output; in this case, one can speak of "High Fidelity". Realizing this type of circuit requires profound experience and knowledge of technique, components and sound. Know-How from which to draw in creating a balance between the many factors involved. There is a common methodology that simplifies the design of an amplifier and consists in the use of the Negative Feedback in order to fill the imperfections generated by the circuit during the amplification process.





# MASTER STROKE CLASSE A



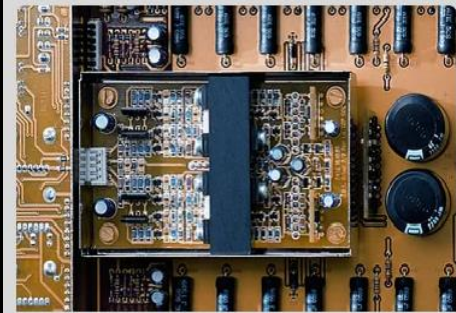
The Feedback has a desensitizing function, it limits the inaccuracies due to an imperfect design and avoids that the circuit faults affect the overall electrical efficiency and the technical characteristics. It works by successive approximations, comparing the amplified signal (affected by distortions) with the original signal, modifying it by attenuating the defects accumulated along the amplification path: the effect proves extremely useful in the common design but the modeling action, acts on the originality of the musical information producing undesirable effects on the timbre, purity and transparency of the sound. The aim of the CLASS A project was to create an uncompromising amplifier, avoiding the use of gimmicks able to correct design errors was one of the essential needs. The CLASS A circuit has, among the main features, the complete absence of negative feedback between input and output, the design effort required for this condition to be realized has been amply repaid by the results. Without the compensations (present in most of the amplifiers), the final output stage is extremely stable on any type of load. The absence of feedback and the optimal sizing of all the stages ensure that, in the proximity of clipping, the saturated circuit makes a distortion from the "soft" waveform, thus avoiding the introduction of the odd harmonics and, as in valve amplifications, listening does not tire even at high dynamic regimes. In the amplifiers adopting the Negative Feedback the clipping is clearly more pronounced ("hard"), able to affect the timbre with the introduction of the odd harmonics that increase the unwanted spectral content.

· CLASS A The operation of an amplifier is defined in class A when the active devices that make it up lead throughout the period of the input signal, or in them flows current for the entire oscillation of the signal, without ever canceling out. This behavior is positively reflected on the electrical and tonal characteristics since the active components that have the task of amplifying (bipolar transistors or mosfets) operate in the linear region of their characteristic curve; as a result they can best express their potential. In order for a conventional final stage to actually operate in class "A", a current must flow in the output devices such that, for a given nominal power which can be supplied to a given load, the same devices are shut off in any condition. The class A therefore guarantees the best possible linearity but with a very low efficiency due to the considerable power dissipated. The performances of traditional class A amplifiers hardly exceed 10 - 15%, hence the reason why class A is reserved exclusively for domestic use. The production of amplifiers from a few dozen watt constrains to dissipate significant amounts of heat, so the use of bulky fins, incompatible with the small spaces, typical of car-audio applications.

· H.E.A.R.T. - High Efficiency A-Class Regulation Technology: With the aim of extending the advantages of class A to car applications, we have developed the circuit system H.E.A.R.T., able to minimize the energy wastage typical of amplifiers in this class of operation. H.E.A.R.T. in broad terms, limits the power to be dissipated to that which is strictly necessary because the amplifier operates in class A, continuously adapts the electrical behavior of the amplification stage to the signal and output load conditions, drastically increasing the overall efficiency of the system if compared with a traditional class A amplifier. This complex strategy works without compromising the timbral and electrical advantages associated with this class of operation and ensures playback in "A" up to 50 Watts RMS for each channel.

· ADJUSTING THE CLASS OF OPERATION AND DYNAMIC RESERVE CLASS A is the first amplifier able to make the listener interact with the type of sound reproduced by the audio system, in fact the subjectivity of the audiophile has, up to now, been an unmanageable variable in project phase. Despite being born with undoubted inclinations Audiophile, the CLASS A has a considerable dynamic reserve, able to satisfy the listener who appreciates the "energetic" reproduction. Thanks to H.E.A.R.T., operates up to 50 Watts RMS in pure class A, exceeded this value, is capable of providing power up to over 100 Watts RMS per channel, passing in class of operation AB. The upper part of the heat sink incorporates an adjustment that acts on the polarization of the circuit; by varying the position, the threshold is established that determines the transition from class A to AB. The adjustment range can vary from 1 to 50 Watts, with the knob at halfway for example, the amplifier operates in class A up to 25 Watts and in class AB from 25 to 100 Watts. Thanks to this adjustment it is possible to perform a sort of "tuning" of the system which, with the intervention on the nuances and details, adapts itself to the listener's perception.

# MASTER STROKE MSK1500

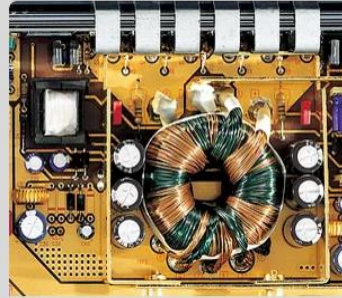


HIGH-END stereo amplifier from 200 + 200 Watts RMS on 4 ohms, 1400 Watts RMS on 1 ohms. Conversion stage dc-dc differentiated (separate positive and negative branches) with energy recovery, switching mosfet for a total of 640 A, stabilized in technology P.R.H.E.S.S. (Primary Regulated High Efficiency Supply System) up to 11 Volt of battery power supply. Amplifier stage in "triple darlington" configuration with high sound output developed on 40 MHz Sanken transistors, equipped with a complex automatic polarization circuit. Signal processor symmetric along its entire path realized with transistors BJT and FET very low counter-reaction.

Audiophile preamplifier that uses very low noise operational amplifiers as well as precision resistors and condensers. Exclusivable electronic crossover that uses high precision AQXM2 frequency modules (settable in high-pass, low-pass and band-pass) with a gradient of 12 dB / oct and configurable Q factor to 0.7 Butterworth or 1 Tchbeitcheff. Parallel variable equalizer with continuity (0 / + 12dB - 40 / 120Hz). Separate input sensitivity levels. Bypass output. Forced ventilation system with controlled Thermo-Load speed. G.R.I.P.S. system of immunization from integrated electromagnetic disturbances. "Trimode" simultaneous Stereo / Mono operation. Self-resetting protections. TRIMFEET fixing system with sliding feet.



# MASTER STROKE MSK3000



HIGH-END high power stereo amplifier from 400 + 400 Watts RMS on 4 ohms, 3000 Watts RMS on 1 ohms. Conversion stage dc-dc differentiated (separate positive and negative branches) with energy recovery, switching mosfet for a total of 960 A, stabilized in technology P.R.H.E.S.S. (Primary Regulated High Efficiency Supply System) up to 11 Volt of battery power supply. Amplifier stage in "triple darlington" configuration with high sound output developed on 40 MHz Sanken transistors, equipped with a complex automatic polarization circuit. Signal processor symmetric along its entire path realized with transistors BJT and FET very low counter-reaction.

Audiophile preamplifier that uses very low noise operational amplifiers as well as precision resistors and condensers. Exclusivable electronic crossover that uses high precision AQXM2 frequency modules (settable in high-pass, low-pass and band-pass) with a gradient of 12 dB / oct and configurable Q factor to 0.7 Butterworth or 1 Tchebitchef. Parallel variable equalizer with continuity (0 / + 12dB - 40 / 120Hz). Separate input sensitivity levels. Bypass output. Forced ventilation system with controlled Thermo-Load speed. G.R.I.P.S. system of immunization from integrated electromagnetic disturbances. "Trimode" simultaneous Stereo / Mono operation. Self-resetting protections. TRIMFEET fixing system with sliding feet.



# KCOMPETITION

## QUALITY'

Quality components.  
SMT Audio pilot stages.  
Open masses loop.  
Circuit completely  
Symmetric.  
Solid parts (Die Aluminum casting).

## PERFORMANCE

Quality components.  
SMT Audio pilot stages.  
Mosfet technology.  
Switching power supply with recovery of energy.  
Types of own circuits.  
Low impedances on the circuits.  
"Thermalspeed" heat sink efficiency.

## CONTROL

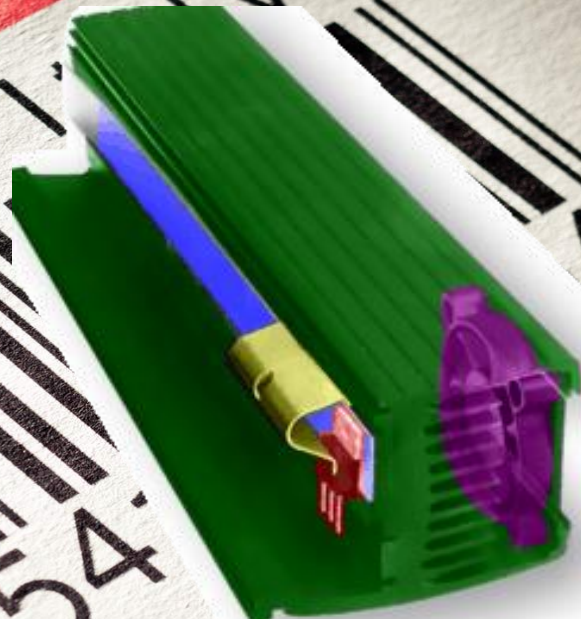
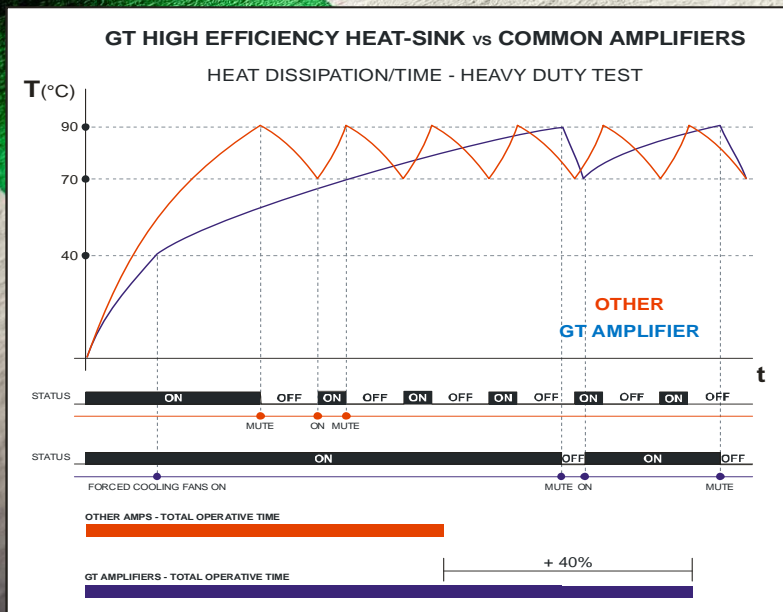
Microprocessor  
Software,  
PC connection,  
Data acquisition and analysis,  
Modularity (like LEGO),  
K optional accessories.





# UNIQUE DESIGN SOLUTIONS

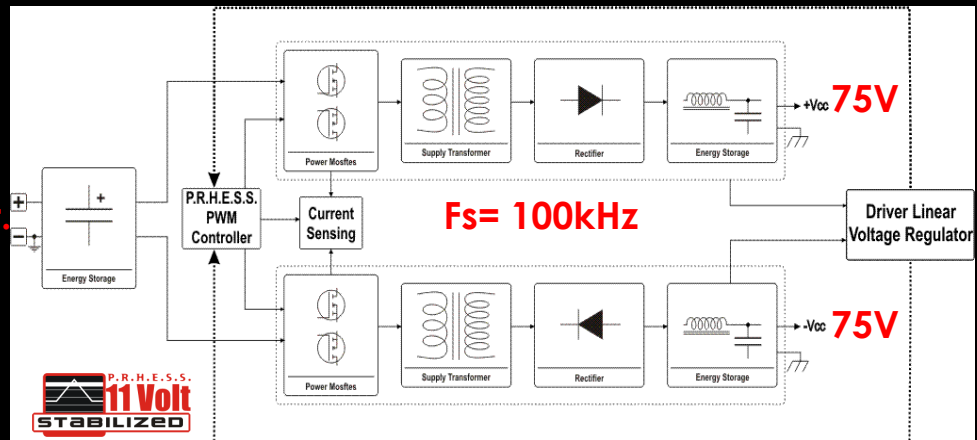
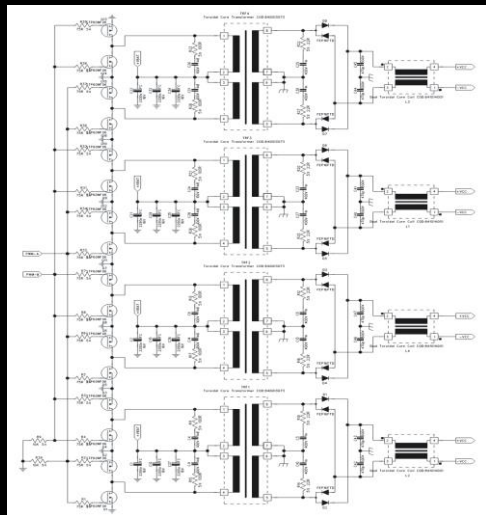
Thanks to the heat transmission system patented by GTTrading, between mosfet and heatsink we can optimize by 40% (as shown below) the dissipation of the mosfets, allowing the amplifier to be kept on longer even in extreme conditions of external heat.



# UNIQUE DESIGN SOLUTIONS

Thanks to our engineering on stabilized power supplies, STEG amplifiers are able to keep the output power unchanged regardless of what happens on the supply voltage. The solution studied by our projectors, to put in parallel more transformers means that you have 50% less losses due to the high current flow.

+ V batt.



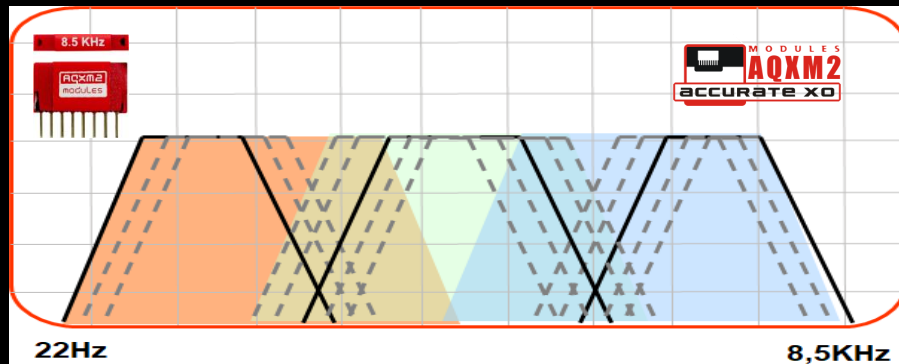
**steg**  
car audio concept

GT trading

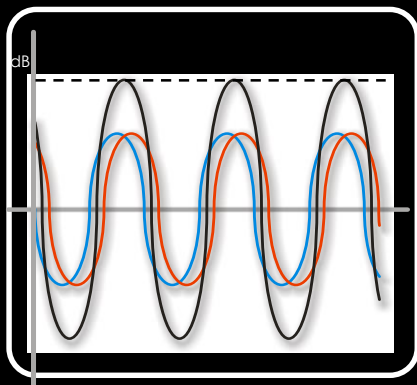
# UNIQUE DESIGN SOLUTIONS

We invented "AQXM2" to minimize errors on the filter of the frequent potentiometers used by the various manufacturers of other brands, thus arriving to have a tolerance on filter accuracy of 1% against 10% of our competitors

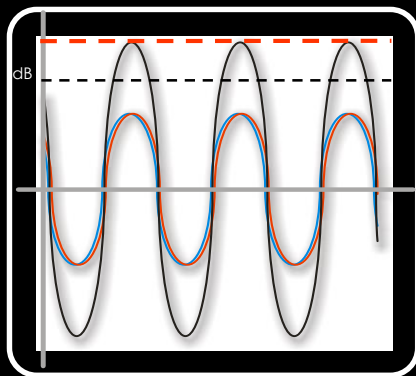
**AQXM2** (frequencies modules for STEG x-over)



10 % accuracy  
by  
potentiometers



1 % accuracy  
by AQXM2

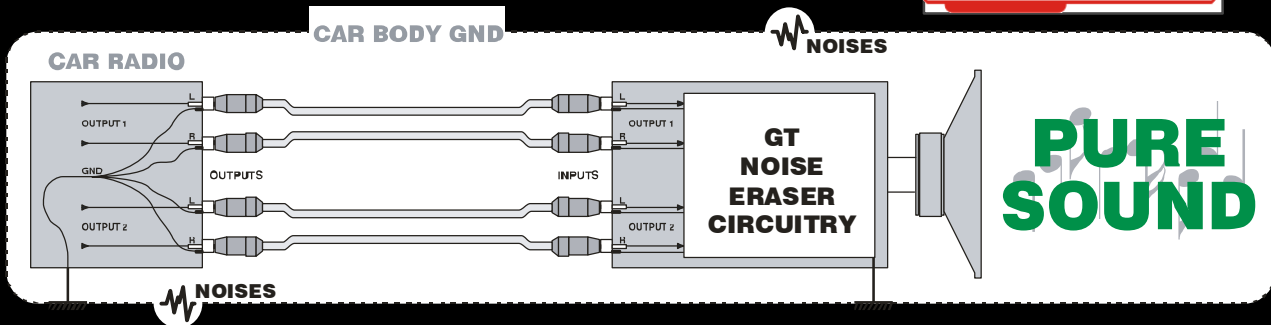
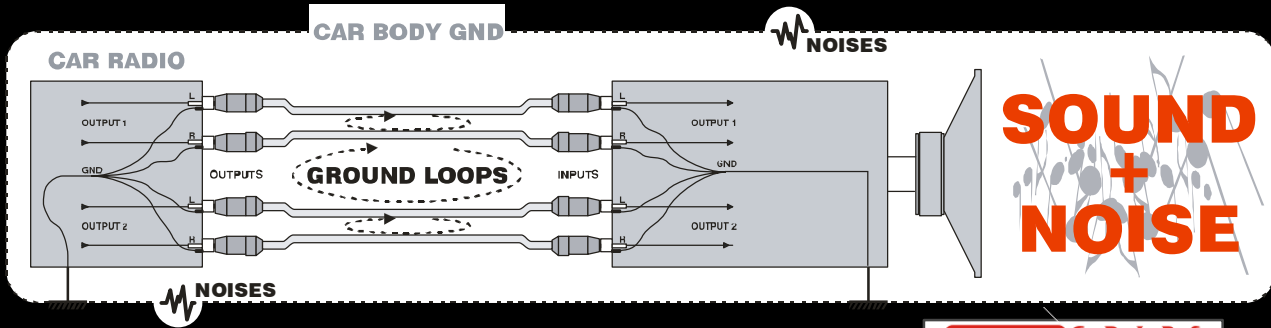


**steg**  
car audio concept

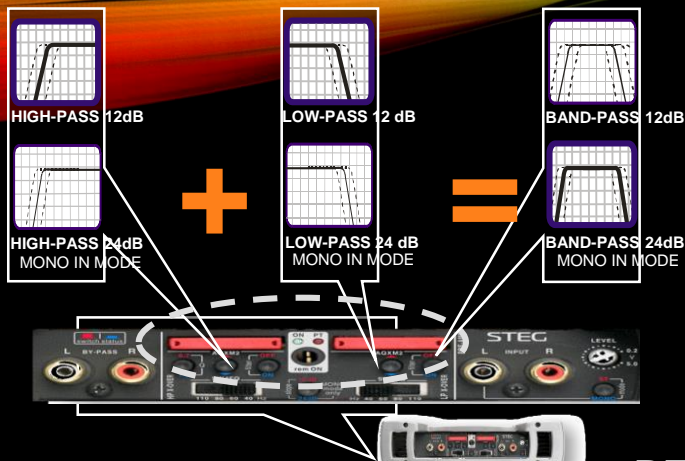
*Trading*

# UNIQUE DESIGN SOLUTIONS

We have created a circuit for separating the masses between the negative of the battery and the PRE OUT of the signal input, in order to eliminate any noise coming from the control units of the cars.







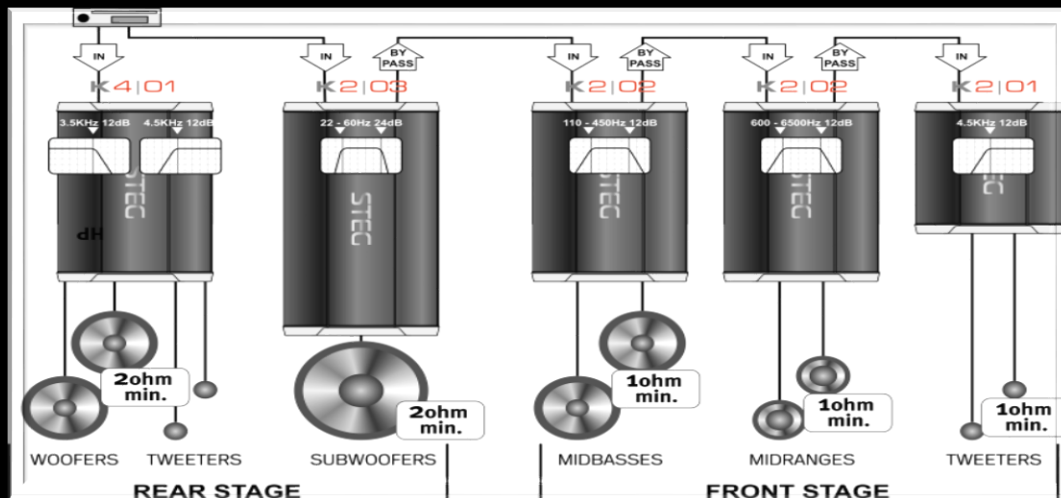
# NSMMS

STEC MULTIWAY MODULAR SYSTEM

UNIQUE DESIGN SOLUTIONS

REAL SITUATION of configuration in the car

To perform the functions of x-over (control) necessary to meet the needs of the customer / installer (he does not know how many crossover routes they need at the time and in future installations) through the versatile technology we have developed and which we consider suitable: SMMS



Six extraordinary electronics, designed to satisfy the most demanding Audiophiles and to drive competition SPL systems. Innovative amplifiers, capable of very high currents, insensitive to the lowest load impedances, up to 2ohm in mono bridge. Elegant and sophisticated design, all-aluminum chassis with tunnels that integrated the active cooling system. Built with quality materials, selected to enhance the most refined installations and ensure the highest level of reliability. Extremely versatile, they incorporate a wide range of functions that can be linked together and can configure complex audio systems without the need for external devices. Stabilized from 11 Volts, many well-sounding watts, always. They support the SERIALPOWER configuration: the stereo models connect together to add up the power of two units as if it were a single amplifier. They incorporate a microprocessor which manages the complex protection system and which, through the STEGLINK port, can communicate with the Personal Computer. Kcompetition is the new way to amplify STEG, once again to move forward every reference.

#### Features:

- "SERIAL POWER" CONNECTION
- PILOTING 1ohm STEREO / 2ohm BRIDGE
- SOUND "AUDIOPHILE"
- ATTITUDE TO S.P.L.
- POWER SUPPLY STABILIZED BY 11 VOLTS BATTERY
- PROTECTIONS MANAGED BY MICROPROCESSOR
- MEMORIZING USER AND INSTALLER DATA
- DATA PROTECTION PASSWORD
- DIGITAL SERIAL NUMBER
- "STEG LINK" CONNECTION TO THE PERSONAL COMPUTER
- DOUBLE ADJUSTMENT TECHNOLOGY FREQUENCY X-OVER
- "SMMS" SYSTEM STEG MULTIWAY MODULAR SYSTEM
- DOUBLE FORCED VENTILATION "INTELLISPEED"



# KCOMPETITION



GTTRADING DATA	K2.01	K2.02	K2.03	K2.04	K4.01	K4.02
WATT RMS @ 4 Ohm Stereo	105 x 2	155 x 2	245 x 2	400 x 2	95 x 4	115 x 4
WATT RMS @ 2 Ohm Stereo	205 x 2	305 x 2	470 x 2	760 x 2	155 x 4	210 x 4
WATT RMS @ 1 Ohm Stereo	365 x 2	555 x 2	875 x 2	1400 x 2		
WATT RMS @ 4 Ohm Bridged Mono	410 x 1	615 x 1	940 x 1	1600 x 1		
WATT RMS @ 2 Ohm Bridged Mono	730 x 1	1110 x 1	1750 x 1	2800 x 1	310 x 2	420 x 2
DIMENSIONS	250 x 56 x 232 mm	340 x 56 x 232 mm	500 x 56 x 232 mm	740 x 56 x 232 mm	340 x 56 x 232 mm	500 x 56 x 232 mm
WEIGHT	3,5 Kg	4,15 Kg	6,42 Kg	8,26 Kg	4,5 Kg	6,47 Kg

Optional and additional features:

HARDWARE KIT & SOFTWARE "MY STEG MANAGER" PC CONNECTION

REMOTE CONTROLS VOLUME AND BASSBOOST

STEGLINK CONNECTION HUB UP TO 10 AMPLIFIERS

"SERIALPOWER" CONNECTION MODULE

AQXM2 FREQUENCY MODULES IN 56 VALUES

**PROJECT** In compliance with absolute quality criteria, the K competition idea is realized. Total harmony achieved with the maniacal care of every detail. Even the smallest detail, is designed and built to best meet its function. **MATERIALS** PREGIATI Structure and termination hulls made entirely of aluminum, processed and processed finely. The printed circuit is built with materials that meet military standards and professional standards, reinforced with gilded copper bars to handle the very high currents in play.

**COMPONENTISTICS** High quality and precision, selected MOSFETs one by one, solid terminal blocks machined from solid that accept large cables and passive components with very low tolerance. **DESIGN** Forms designed by the function, elegant and sophisticated lines. Designed to dissipate heat quickly, they incorporate INTELLISPEED fans placed in the hottest spots, whose speed varies proportionally to the temperature. **SUONO** Final stage and preamplifier as a synthesis of the STEG know-how. Exclusive circuits such as GR.I.P.S. (which eliminates any external disturbance), Straight-In (reduced signal path) and the new audiophile drivers entirely with discrete components, the heart of the Bel Suono K competition.

**ENERGY:** K competition, the name of these new electronics, represents the commitment taken by STEG in creating designed amplifiers, as well as for sound, for competitions and for SPL. The available power, high current and impressive dynamics are among the features guaranteed by a project that has not spared anything. The massive use of very powerful semiconductors, the distribution of power on various transformers in parallel (in the photo, the K2.04 equipped with 4 transformers and 4 inductors) and the use of an extremely efficient dissipating system, guarantee all the energy and the reliability required to continuously drive all types of loads, up to 1 ohm. **SERIALPOWER** is a unique mode of serial connection of the outputs, reserved for stereo models, allows you to add the power of two units as if they were a single amplifier.

**FUNCTIONALITY:** The numerous functions on the input panel make up the SMMS system (STEG MULTIWAY MODULAR SYSTEM). Two separate and independent LP and HP filters - High-pass configurations, Low-pass, Band-pass, Flat - Selectable slope 12 / 24 dB - BY-PASS output - Filter Q 0.7 / 1.2 - Dual frequency control technology with 4-step switch or AQXM2 modules. SMMS allows the realization of sophisticated multi-way systems (3,4,5,6 and more routes, according to the installation needs), avoiding the use of expensive and noisy external cross-over which heavily degrade the sound. On the cover, an example of a complete multi-amplified six-way system / duplex, built using only the SMMS functions integrated into K amplifiers.

**CONTROL AND COMMUNICATION: MICROPROCESSOR** The K competition amplifiers incorporate an innovative system for managing service operations and operating controls. Compared to analogue techniques of common use, each function of supervision of the operating status is performed by a microprocessor, also in charge of the management of new and important functions related to the Communication. By continuously analyzing the circuitry, the STEG digital system protects the amplifier from malfunctions, by checking the status of the power supply, the ground connection, the short circuits and the presence of direct current on the outputs, as well as the on / off bumps and the thermal state of the power devices (by regulating the flow of cold air). If necessary, it intervenes with the muting (Muting) or, in extreme cases, with the total shutdown of the amplifier, safeguarding the electronics and the connected devices. Each protection event is identified by the LEDs in the control panel and, above all, recorded in detail on the integrated memory, as happens with the "black box" of the aircraft.

**PERSONAL COMPUTER:** storing data, offers K competition new possibilities for use. STEG has created a Hardware / Software kit that, through the STEGLINK connection, allows communication between the amplifiers and the Personal Computer. **MY STEG MANAGER** is the program that interacts with the integrated microprocessor, drawing from its memory the information stored during operation. Thanks to a simple and intuitive graphic interface, **MY STEG MANAGER** shows a monitor the status of the amplifier in real time, reporting basic operating parameters such as: supply voltage and remote, operating temperatures (right and left side of the heatsink), fan activity and, above all, detailed condition of the protections. By analyzing the information, the user is able to quickly determine the cause of any anomalies. In addition to the instantaneous condition of the amplifier, **MY STEG MANAGER** can display the history of the protection events. From one of the menus, you access a section that collects the operational details and graphically summarizes the data relating to the last 14 protection interventions. The program, reading the data from the amplifier, faithfully reports temperatures, tensions and type of intervention, showing an analysis of the accurate and useful trend curves, both in the overall verification of the audio system and in the search for installation errors. **MY STEG MANAGER** provides for the connection of a HUB accessory designed to manage high-level achievements and professional competition systems, thanks to which it is possible to connect up to 10 K competition amplifiers to the PC. Read yes, but also write. In fact, the software also allows you to record your personal details and those of the installer in a protected area of memory. The data entered will join the digital serial number (entered during production) generating a digital signature that makes each amplifier unique, non-counterfeited and always recognizable, regardless of tampering or theft.



The new STEG D Class line, born in August 2011, contains 25 years of GTTrading experience in the design and production of car amplifiers. Elegant and sophisticated design, all-aluminum chassis with tunnels that integrated the active cooling system. Built with quality materials, selected to enhance the most refined installations and ensure the highest level of reliability. Extremely versatile, they incorporate a wide range of functions that can be linked together and can configure complex audio systems without the need for external devices. Stabilized starting from 11 Volt, battery, with Range 5-15000 Hz, many well-sounding Watt, ALWAYS. They support the SERIALPOWER configuration: they connect together to add up the power of two units as if it were a single amplifier. They incorporate a microprocessor that manages the complex protection system and which, through the STEGLINK port, can communicate with the Personal Computer. They are the first and at the moment the only full-range Class-D amplifiers designed and manufactured in Italy.

# D'' CLASS



*GTTrading*



**MYSTEC**  
manager



**MSMMS**  
STEG MULTIWAY MODULAR SYSTEM

## GTTRADING DATA

WATT RMS @ 4 Ohm Mono

**K1.2500**

750 x 1

**K1.5000**

750 x 1

WATT RMS @ 2 Ohm Mono

1400 x 1

1800 x 1

WATT RMS @ 1 Ohm Mono

2500 x 1

2800 x 1

WATT RMS @ 0,5 Ohm Mono

5000 x 1

DIMENSIONS

500 x 56 x 232 mm

670 x 56 x 232 mm

WEIGHT

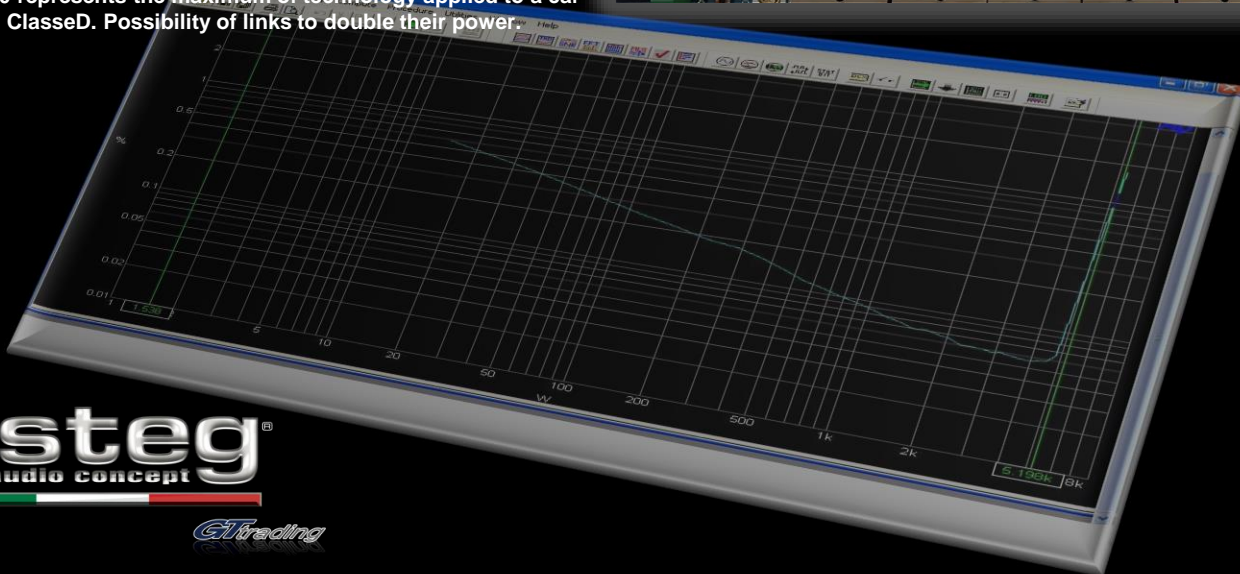
6,47 Kg

8 Kg



# D'' CLASS

To realize this amazing product we have put all of them, from thirty years experience in the Car Audio sector to the layout with separate circuits and insulated with their own masses, to the 4 layer printed circuit to prevent the output signal tracks from interfering with the frequency of switching of the final, to the double input differential to avoid any mass loops that can be formed in cars between car radios and car control units, to the oversized power supply with 1280 Ampere that is driven by 3 Ampere drivers each 'to increase efficiency, to cool with forced air. All this makes it the best product on the market at the level of audio quality with distortions lower than 0.05%. Until today it was unthinkable to be able to realize a class D with these powers and with a so low distortion, attributable only to class AB or even class A. The K1.5000 represents the maximum of technology applied to a car amplifier in ClasseD. Possibility of links to double their power.



**steg**  
car audio concept

*Cl trading*

Two years of research into the most advanced and quality materials, to create a Formula 1 product in SPL competitions. Niko 1.7000 is the latest jewel born in the GTTrading house, which includes 30 years of experience in the development and production of car amplifiers. Elegant and sophisticated design, all-aluminum chassis integrated by the active cooling system. Built with quality materials, selected, to improve the most refined installations and ensure the highest level of reliability. Extremely versatile, they incorporate a wide range of functions, can be connected to each other and can configure complex audio systems without the need for external devices. Stabilized starting from 10.5 Volt of battery, with Range 5-500 Hz, many Watt with good sound, ALWAYS, in fact, is one of the few high-power class D in the world to have distortions even below 0.05%. They support the SERIALPOWER configuration: they connect together to add the power of two units as if it were a single amplifier. They incorporate a management system that manages the complex protection system monitoring in real-time: power supply of each single terminal, temperature of the heatsink, possible continuous output, load applied to the output of the speaker terminals, problem of RCA masses, all this makes the new Niko a product of extreme reliability in any situation is subjected. They are the first and at the moment the only high power class D amplifiers designed and manufactured in Italy.



# NIKO

## 1 D7000



### GTTRADING DATA

WATT RMS @ 4 Ohm Mono

WATT RMS @ 2 Ohm Mono

WATT RMS @ 1 Ohm Mono

WATT RMS @ 0,5 Ohm Mono

DIMENSIONS

WEIGHT

**K1.7000**

3500 x 1

6000 x 1

7000 x 1

7000 X 1

700 x 60 x 250 mm

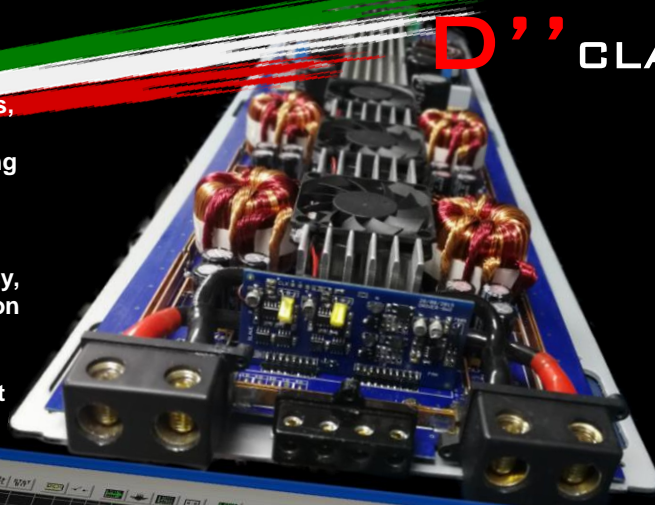
10 Kg

# D'' CLASS

To realize this fantastic product we have put everyone, from thirty years of experience in the Car Audio sector to the layout with separate circuits and insulated with their masses, to the 4-layer printed circuit to prevent the traces of the output signal from interfering with the frequency of switching of the final, to the double differential of input to avoid possible mass rings that can be formed in the cars between car radios and control units, to the supercharging with 3800 Ampere driven by 6 Ampere drivers to increase the efficiency, up to the cooling with forced air to allow the quick dissipation of heat in the heatsink.

All this makes it the best product on the market in terms of audio quality with distortions of less than 0.05%. Until now it was unthinkable to be able to realize a class D with these powers and with a distortion so low, attributable only to the class AB or even to a class A.

The Niko 1.7000 represents the maximum of technology applied to a car amplifier in ClasseD.



**steg**  
car audio concept

*Cl trading*



# ACCESSORIES

## K Accessories

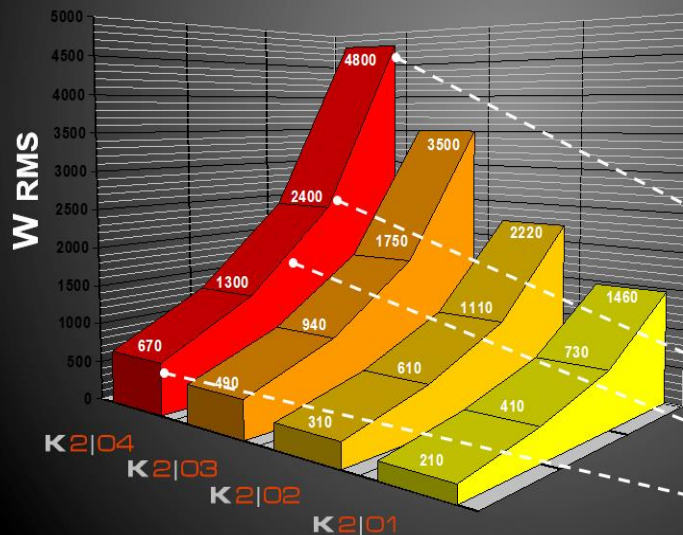
## PERFORMANCE

Thanks to the optional SERIALPOWER devices and to a special configuration of the outputs, the power of the stereo amplifiers can be added to drive a single loudspeaker with high power.



**K**ACCESSORI

K2 01	K2 02	K2 03	K2 04	WATT RMS @ 4 Ohm
1460 x 1	2220 x 1	3500 x 1	4800 x 1	



SERIAL POWER  
SPA 01



LOADS

SERIAL @ 4  
OHM

MONO @ 2 OHM

STEREO @ 1 OHM

STEREO @ 2 OHM



# ACCESSORIES

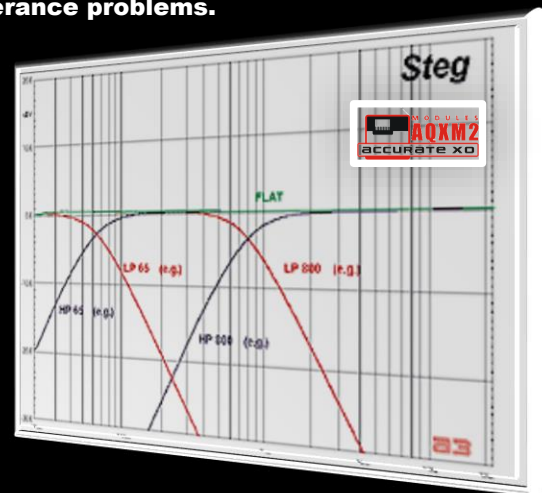
## AQXMII

**High-precision frequency module for integrated crossover STEG (Master Stroke, Kcompetition, QmosII)  
This crossover system was designed by GTTrading to eliminate potentiometer tolerance problems.**



**Available frequencies:  
(Values in Hz)**

25-30-33-35-38-40-45-  
50-55-60-65-70-75-80-  
85-90-95-100-110-120-  
130-150-180-200-250-  
300-350-400-450-500-  
600-700-800-900-1000-  
1100-1200-1300-1400-  
1500-1800-2000-  
2500-3000-3500-4000-  
4500-5000-5500-6000-  
6500-7000-7500-8000-  
8500|



**Pack of high-precision frequency modules for integrated crossover STEG (Master Stroke, Kcompetition, QmosII)  
This crossover system was designed by GTTrading to eliminate tolerance problems of the potentiometers.**



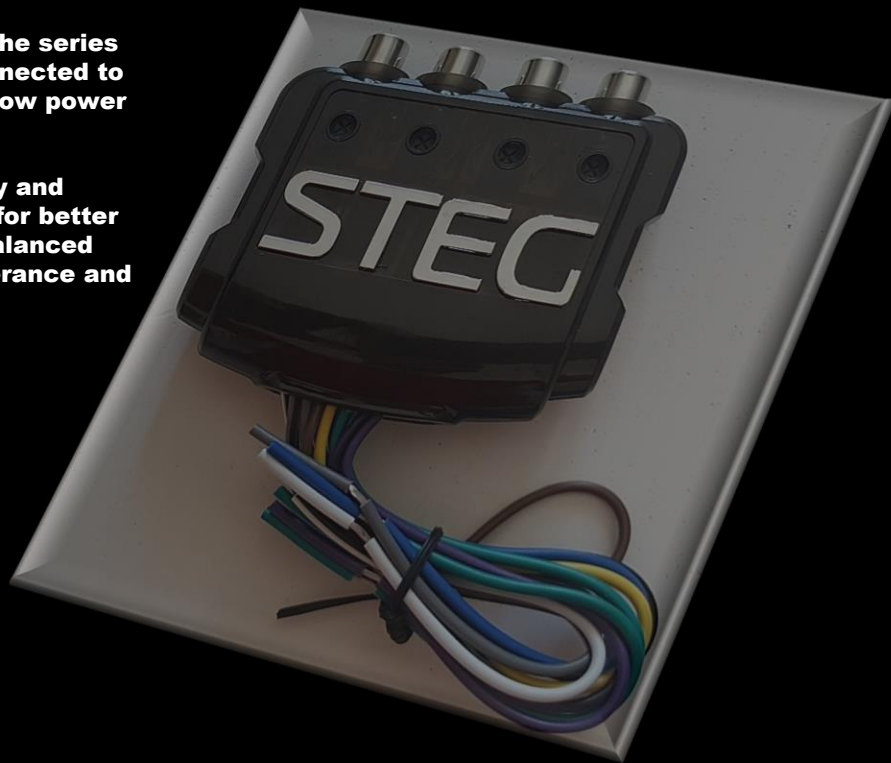
# ACCESSORIES

## **High / low level adapter**

**Allows you to convert the high level signal of the series sources into low level signal (PRE) Can be connected to the car radio with high power output (BTL) or low power (SE)**

**Generation of the ignition signal (Remote);**

**Balanced input stage for better noise immunity and response speed • Calibrated input impedance for better coupling with source output impedance • Unbalanced output to drive any type of amplifier • Low tolerance and high quality passive components used (with transformers)**



 **steg**<sup>®</sup>  
car audio concept

*GI Trading*

# ACCESSORIES

MY STEG MANAGER is the program that interacts with the integrated microprocessor, drawing from its memory the information stored during operation. Thanks to a simple and intuitive graphic interface, MY STEG MANAGER shows a monitor the status of the amplifier in real time, reporting basic operating parameters such as: supply voltage and remote, operating temperatures (right and left side of the heatsink), fan activity and, above all, detailed condition of the protections. By analyzing the information, the user is able to quickly determine the cause of any anomalies. In addition to the instantaneous condition of the amplifier, MY STEG MANAGER can display the history of the protection events. From one of the menus, you access a section that collects the operational details and graphically summarizes the data relating to the last 14 protection interventions. The program, reading the data from the amplifier, faithfully reports temperatures, tensions and type of intervention, showing an analysis of the accurate and useful trend curves, both in the overall verification of the audio system and in the search for installation errors. MY STEG MANAGER provides for the connection of a HUB accessory designed to manage high-level achievements and professional competition systems, thanks to which it is possible to connect up to 10 K competition amplifiers to the PC. Read yes, but also write. In fact, the software also allows you to record your personal details and those of the installer in a protected area of memory. The data entered will join the digital serial number (entered during production) generating a digital signature that makes each amplifier unique, non-counterfeited and always recognizable, regardless of tampering or theft.



## KACCESSORIES

HUB is designed to handle high-level achievements and professional competition systems, thanks to which it is possible to connect up to 10 K competition amplifiers to the PC. Read yes, but also write. In fact, the software also allows you to record your personal details and those of the installer in a protected area of memory. The data entered will join the digital serial number (entered during production) generating a digital signature that makes each amplifier unique, non-counterfeited and always recognizable, regardless of tampering or theft.



# ACCESSORIES

**MYSTEC**  
manager

Che cosa fa e cosa permette di fare?

**Dati:** Amplificatore, proprietario e installatore.

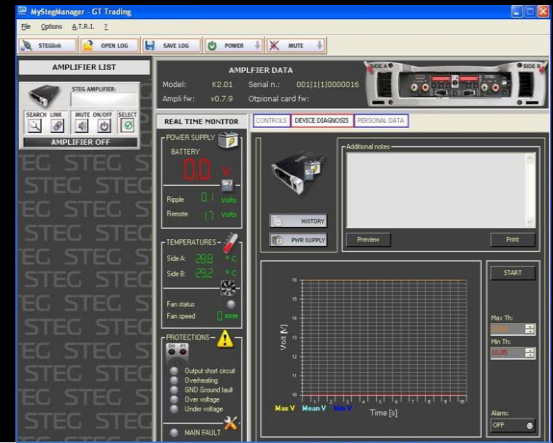
**Tempo reale, monitoraggio e analisi:** tensione della batteria auto, temperatura, velocità dei ventilatori, visualizzazione dello stato di protezione.

**Acquisizione in tempo reale, dati di archiviazione e eventi di analisi post-elaborazione (ultimi 15):** Cortocircuito dell'altoparlante di uscita (<0.8 Ohm), Sotto (9v) & Sopra (16v) tensione della batteria, Temperatura di surriscaldamento (90° C), Contatori (on/off, S.C., T°, GND, Sotto/Sopra V batt, Guasto).

**Invio di dati:** tramite programma di posta elettronica (es. Outlook, Outlook express, Eudora ecc.) Attraverso W.V.V.W alle assistenze di servizio.

**Stampa di dati:** da Windows O.S. Strumenti alle stampanti di sistema.

**MYSTEC**  
MANAGER



Software interface

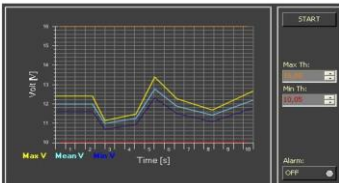
CONTROL

REAL TIME MONITOR



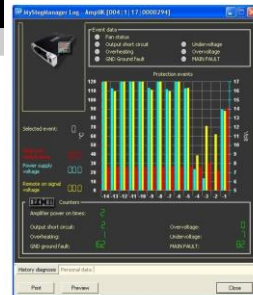
**Real time, monitor & analysis:**

Car battery voltage graph, heatsink temperatures, fans speed, protections status display (output S.C., T°, GND fault, under & over V Batt.).



Software interface

CONTROL



**Real time acquisition, storage datas & post processing analysis events (the latest 15):** output speaker short circuit (<0.8 Ohm), Under (9v) & upper (16v) car battery voltage, overheating (90° C) temperatures, counters (on/off, S.C., T°, GND, Down/Up V batt, Main fault).

**KACCESSORI**

WEB communication to [atn@gltrading.it](mailto:atn@gltrading.it)

CONTROL







# DSP6TO8

**Digital Signal Processor with 6 inputs and 8 outputs.  
32Bit 192KHz**

- 6 input channels, 8 output channels
- Time-Delay with steps of 0.02 msec, insertion in cm, or msec. All settings are in real-time
- External control with display for presets and main settings
- USB connector for PC adjustments
- Low-Level or High-Level Input with Auto-Sense (High-Level only)
- Aux input with Auto-Fading for stereo signal, speakerphone and navigation
- 5 presets
- Mixer matrix to mix and match input / output channels at will
- SUM function (in input) for active OEM systems / sources



## SPECIFICHE TECNICHE:

**INPUT MODE:** Low Level (LL) / High Level (HL)  
**INPUT IMPEDANCE:** > 15Kohm (LL) / 47ohm (HL)  
**INPUT SENSITIVITY:** 2Vrms ÷ 8Vrms (LL) / 2Vrms ÷ 15Vrms (HL)  
**MAX OUTPUT SIGNAL:** 8Vrms  
**THD DISTORTION:** <0.002% @ 1Vrms  
**FREQUENCY RESPONSE:** 10Hz ÷ 22KHz (within -0.3dB)  
**CHANNEL SEPARATION:** >88dB (@ 1KHz)  
**SUPPLY VOLTAGE:** 11V ÷ 15V  
**CURRENT CONSUMPTION:** 0.4A @ 12V  
**GROUND ISOLATION vs CAR BODY:** 1Kohm  
**AUTOSENSE:** two operative modes (yes, HL only)  
**REMOTE OUTPUT:** 50mA max.  
**COMMUNICATION PERIPHERALS:** WI-FI , Remote controller  
**OPTICAL BOARD:** S/PDIF  
**SIZE:** 185 x 120 x 43 mm (including fixing feet)



# ST SERIES

August 2016 GTTrading is proud to present the new line of ST amplifiers. Final stage Audiophile a Transistor, dual input differential to eliminate any noise generated by the car radio, make the new ST line can satisfy the most demanding Audiophiles. Innovative amplifiers, capable of very high currents. Elegant and sophisticated design, all-aluminum chassis. Built with quality materials, selected to enhance the most refined installations and ensure the highest level of reliability. Extremely versatile, they incorporate a wide range of functions that can be linked together and can configure complex audio systems without the need for external devices. Possibility of ignition with autosense, (at the arrival of the audio signal turns on and off as soon as the audio signal goes off), possibility of entry in High Level. ST series is the new way of amplifying STEG, destined once again to move forward every reference, in these three models it contains 30 years of experience in designing and making car amplifiers.



ENTRY SENSITIVITY: Volt RMS 0,5 V - 9 V  
 HIGH Pass 15Hz – 500Hz  
 LOW Pass 50Hz – 4000Hz  
 BAND Pass 15Hz – 4000 Hz  
 BASS BOOST 0 +12 dB



## GTTRADING DATA

WATT RMS @ 4 Ohm Stereo

**ST202**

125 x 2

**ST401**

90 X 4

**ST402**

120 X 4

WATT RMS @ 2 Ohm Stereo

195 X 2

130 X 4

190 X 4

WATT RMS @ 4 Ohm Mono

390 x 1

260 X 2

380 X 2

**DIMENSIONS**

360 x 52 x 230 mm

360 x 52 x 230 mm

440 x 52 x 230 mm

**WEIGHT**

3.21 Kg

3,41 Kg

4,21 Kg

August 2016 GTTrading is proud to present the new line of DST amplifiers. Three extraordinary electronic devices, designed to satisfy the most demanding installations. Innovative amplifiers, dual input differential to completely stop the ground loop, so that in any condition of use are eliminated all the noise generated by the control units of the car. Elegant and sophisticated design, all-aluminum chassis. Built with quality materials, selected to enhance the most refined installations and ensure the highest level of reliability. Extremely versatile, they incorporate a wide range of functions that can be linked together and can configure complex audio systems without the need for external devices. DST series is the new way of amplifying STEG, destined once again to move forward every reference, in these three models we enclose 30 years of experience in designing and making amplifiers for cars. The STD line was created for the needs of our distributors / installers to have reduced dimensions for "invisible" systems. Reduced dimensions, yields over 80%, possibility of ignition with autosense, (when the audio signal arrives it turns on and off as soon as the audio signal goes out) possibility of entry in High Level, make that the new line STD can have applications on all new cars including electric cars. To date it was unthinkable to be able to make class D amplifiers with tonal performance superior to the AB class, but with this new line we have succeeded in full. SENSIBILITA' D'INGRESSO: Volt RMS 0,5 V - 9 V

HIGH Pass 50Hz – 250Hz  
 LOW Pass 50Hz – 250Hz  
 BASS BOOST 0 +12 dB



# DST SERIES

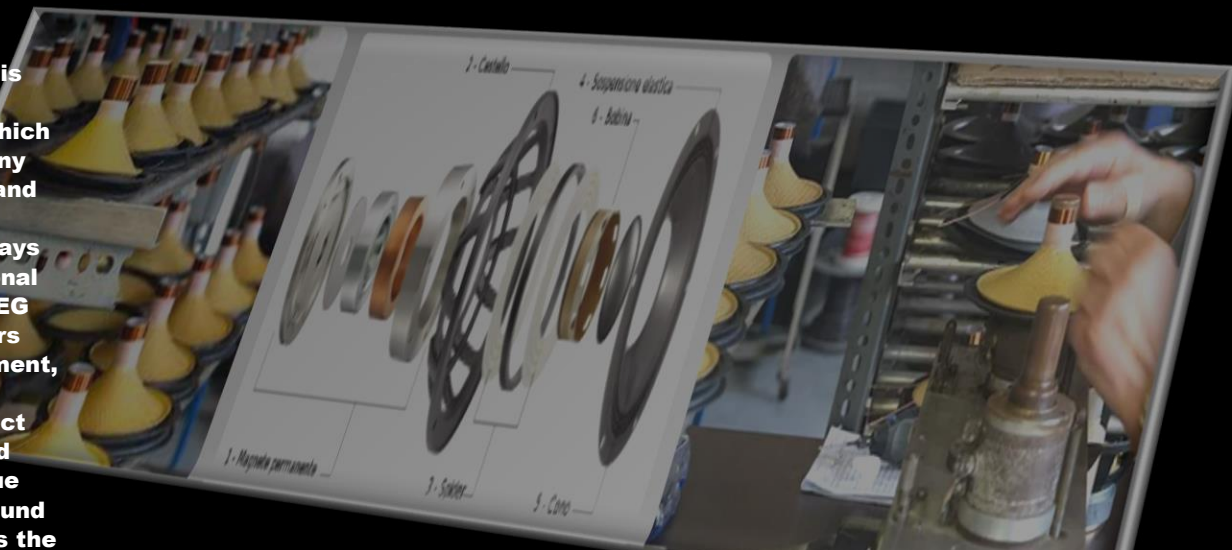


GTTRADING DATA	DST202	DST401	DST850
WATT RMS @ 4 Ohm Stereo	100 x 2	75 X 4	500 X 1
WATT RMS @ 2 Ohm Stereo	195 X 2	120 X 4	850 X 1
WATT RMS @ 4 Ohm Mono	390 x 1	240 X 2	1700 X 1 MAX
DIMENSIONS	135 x 52 x 230 mm	135 x 52 x 230 mm	440 x 52 x 300 mm
WEIGHT	3.21 Kg	3,41 Kg	4,21 Kg



# UNIQUE DESIGN SOLUTIONS

A very important role is played by the R & D loudspeaker group, which works in strict harmony with our distributors and dealers to develop products that are always suitable for international markets. The new STEG speakers contain years and years of development, hours and hours of listening tests to select the best materials and enclose them in unique products. The new Sound Quality speaker line is the ultimate expression of sound reproduction and uncompromising design. From the use of ceramics to the personalized basket we have not neglected any detail to bring in the car the exact reproduction of a Live concert. For about a year since their release they are already a reference for the world market.



**All the line of speakers by STEG is produced entirely by hand, in a traditional way. Tested one by one to minimize malfunctions due to factory errors. The new 165 mm SQ and ST kit series is the latest addition to the Sound Quality series. SQ650C and SQ650 two economic kits able to provide strong emotions from the first class, recently on the market are already the best-selling car product in the world thanks to its unparalleled quality / price we have built a new reference for the whole world. For those who need even more performance in terms of power and precision of the music while maintaining an affordable price to all, we have created this extraordinary product: ST650C (with integrated crossover in the package) ..**



# MSK SET SERIES

Hi-End level.. Completely built by hand with KM0 components, totally coming from the Italian production chain. The first in the class ... Captures the listener with its naturalness of sound, the accuracy of the timbre and the impulsive response. The composite paper cone offers the highest expression of sound in terms of warm and detailed sound. The aluminum body designed to offer the best heat dissipation, houses a neodymium magnetic unit in order to make the design unique and very linear and drastically reduce the reflections of the back waves.

## WOOFER



Hi-End level.. Completely built by hand with KM0 components, totally coming from the Italian production chain. MSK Tweeter features a very light Tetolon membrane, a double-wrapped coil and a high-density neodymium magnet. The advanced design and engineering dedicated to the rear damping chamber with the ring geometry and the magnet area, together with the attention to the selection of materials, determined a frequency response on the lower limits, reduced harmonic distortion, natural, full of detail sounds.

## TWEETER



Hi-End level.. Completely built by hand with KM0 components, totally coming from the Italian production chain. The composite paper of the cone and the rubber suspension make listening to this speaker something exceptional, clear details the main feature of this medium. Easy installation and low weight thanks to the neodymium magnet designed to offer maximum efficiency while maintaining very small dimensions.

The core of the midrange is a powerful neodymium magnetic group. Efficiency and linearity make it an irreplaceable component to obtain a fine and dynamic average, while its compact dimensions allow versatile and performing installations.

## MEDIUM



GTTRADING DATA	WOOFER	MEDIUM	TWEETER
DIMENSION (mm)	165	87	52
POWER RMS (watt)	90	50	50
POWER PEAK (watt)	80	70	60
IMPEDANCE (ohm)	4	4	4
FREQUENCY RESPONSE (Hz)	5 – 10 K	5 – 10 K	1100 – 20 K
SENSITIVITY ' (dB/SPL)	87	90	92
COIL DIAMETER(mm)	35,5	35,5	32
MAGNET	NEODYMIUM	NEODYMIUM	NEODYMIUM
CONE	COMPOSITE PAPER	COMPOSITE PAPER	SILK

# SQ SERIES

RE65C the first in the class ... Captures the listener with its sound quality, stamp accuracy and impulsive response. The ceramic cone offers the highest expression of sound in terms of warm and detailed sound. The aluminum body designed to offer the best thermal dissipation, accommodates a neodymium magnetic unit coated with an aluminum support so as to make the design unique and very linear and to drastically reduce the rear wave reflections.



SQ32 presents a very light Tetolon membrane, a voice coil wound on a double layer and a high density neodymium magnet. The advanced design and engineering dedicated to the rear damping chamber with the ring geometry and the magnet area, together with the attention to the selection of materials, have determined a frequency response on the lower limits, reduced harmonic distortion, natural, rich of sounds of detail.



PRINCE 65C rubber suspension and fiberglass cone make listening to this speaker something exceptional, clear details and warm sound the main features of this woofer. Easy installation and reduced weight thanks to the neodymium magnetic unit designed to offer maximum efficiency while keeping very small dimensions.



GTTRADING DATA	RE	PRINCE	SQ32
DIMENSION (mm)	165	165	52
POWER RMS (watt)	120	100	90
POWER PEAK (watt)	180	160	110
IMPEDANCE (ohm)	4	4	4
FREQUENCY RESPONSE (Hz)	5 – 10 K	5 – 10 K	1100 – 20 K
SENSITIVITY ' (dB/SPL)	87	88	92
COIL DIAMETER(mm)	35,5	35,5	32
MAGNET	NEODYMIUM	NEODYMIUM	NEODYMIUM
CONE	CERAMIC	GLASS FIBER	SILK

# SQ SERIES

SE650C and SG650C based on the excellent experience of the RE65C model this model incorporates the rubber suspension the composite cone in cotton and glass fiber, designed by our designers to offer maximum detail for every type of reproduction. The Tweeter has a very light composite membrane + PORON membrane, the voice coil wound on the double layer and the high density neodymium magnet.



GTTRADING DATA	SE650C	SG650C	TWEETER
DIMENSION (mm)	165	165	60
POWER RMS (watt)	120	100	90
POWER PEAK (watt)	180	160	110
IMPEDANCE (ohm)	2	2	4
FREQUENZY RESPONSE (Hz)	48 – 6 K	5 – 10 K	1300 – 25 K
SENSITIVYTI (dB/SPL)	89	88	91
COIL DIAMETER (mm)	35,5	35,5	32
MAGNET	FERRITE	FERRITE	NEODYMIUM
CONE	PAPER + SILK	PAPER + SILK	CERAMIC

# SQ SERIES



GTTRADING DATA	ST650C	TWEETER
DIMENSION (mm)	165	50
POWER RMS (watt)	180	60
POWER PEAK (watt)	220	80
IMPEDENCE (ohm)	4	4
FREQUENCY RESPONSE (Hz)	46 – 10 K	1400 – 20 K
SENSITIVITY (dB/SPL)	88	90
COIL DIAMETER (mm)	30,5	25,5
MAGNET	FERRITE	NEODYMIUM
CONE	PAPER	SILK

ST650C collects the most advanced technologies developed for STEG components. All the experience of our designers has been invested in the design of these precious components, to create a synergy that can offer the highest quality sound in terms of bandwidth, dynamics, naturalness and richness of details. The new reference for their category.



# SQ SERIES



SQ650C The two-way system includes a tweeter and a woofer easy to install in OEM positions, the woofers are equipped with high power seal, clear tone in the details and high dynamics.

The SQ650 features a coaxial tweeter with a single sound emission point. It is possible to obtain a constant response in phase, with the consequent reconstruction of the acoustic scene comparable to a separate woofer and tweeter system. The 6.5" cone made with an exclusive profile for maximum excursion linearity.



GTTRADING DATA	SQ650C	TWEETER	SQ650
DIMENSION (mm)	165	41	165
POWER RMS (watt)	120	60	120
POWER PEAK (watt)	160	80	160
IMPEDENCE (ohm)	4	4	4
RESPONCE FREQUENCY (Hz)	60 – 10 K	1800 – 20 K	50 – 30 K
SENSITIVITY (dB/SPL)	87	89	90
COIL DIAMETER (mm)	25,5	25,4	25,5
MAGNET	FERRITE	NEODYMIUM	FERRITE
CONE	PAPER	SILK	PAPER

# SQ SERIES



**SQ30**

SQ30 and SQ35. The core of the midrange is a powerful neodymium magnetic group. Efficiency and linearity make it an irreplaceable component to obtain a fine and dynamic average, while its compact size allows versatile and high performance installations. Grid included.



**SQ35**

## GTTRADING DATA

	<b>SQ30</b>	<b>SQ35</b>
<b>DIMENSION (mm)</b>	70	80
<b>POWER RMS (watt)</b>	80	80
<b>POWER PEAK (watt)</b>	100	100
<b>IMPEDENCE (ohm)</b>	4	4
<b>FREQUENCY RESPONSE (Hz)</b>	100 – 25 K	100 – 25 K
<b>SENSITIVITY (dB/SPL)</b>	88	90
<b>COIL DIAMETER (mm)</b>	26	28
<b>MAGNET</b>	NEODYMIUM	NEODYMIUM
<b>CONE</b>	PAPER + SILK	CERAMIC

**STEG****SG** SERIES**GTTRADING DATA**

	<b>SG30</b>
<b>DIMENSION (mm)</b>	<b>87</b>
<b>POWER RMS (watt)</b>	<b>80</b>
<b>POWER PEAK (watt)</b>	<b>100</b>
<b>IMPEDANCE (ohm)</b>	<b>4</b>
<b>FREQUENCY RESPONSE (Hz)</b>	<b>110 – 25 K</b>
<b>SENSITIVITY (dB/SPL)</b>	<b>88</b>
<b>COIL DIAMETER (mm)</b>	<b>26</b>
<b>MAGNET</b>	<b>NEODYMIUM</b>
<b>CONE</b>	<b>PAPER + SILK</b>

SG30 The core of the midrange is a powerful neodymium magnetic group. Efficiency and linearity make it an irreplaceable component to obtain a fine and dynamic average, while its compact size allows versatile and high performance installations.  
Grid included.

# SQ SERIES



**SQS12**

SQS12 is the Sound Quality STEG subwoofer developed with the same original features as woofers: an aluminum basket with a large aerodynamic structure, a pressed cotton-fiber cone with Light Damping treatment, an extremely light butyl rubber suspension, a aluminum means that the reproduction is similar to a live concert. It is designed to offer maximum performance in reduced volumes.

ST12 is designed to offer optimal performance in a sealed container with compact volumes. The components of the ST12 subwoofer have been developed with a primary objective: to provide high powers in small spaces. The exit is a question of excursion; the more the air moves the cone, the greater the exit. However, the reduced mounting depth traditionally meant a low excursion.



**ST12**

## GTTRADING DATA

**DIMENSION (mm)**

**POWER RMS (watt)**

**POWER PEAK (watt)**

**IMPEDANCE (ohm)**

**FREQUENCY RESPONSE (Hz)**

**SENSITIVITY (dB/SPL)**

**COIL DIAMETER (mm)**

**MAGNET**

**CONE**

## SQS12

32

400

800

2 + 2

26 – 1 K

87,4

75

FERRIRE

PAPER

## ST12

32

400

800

4

26 – 1 K

86,9

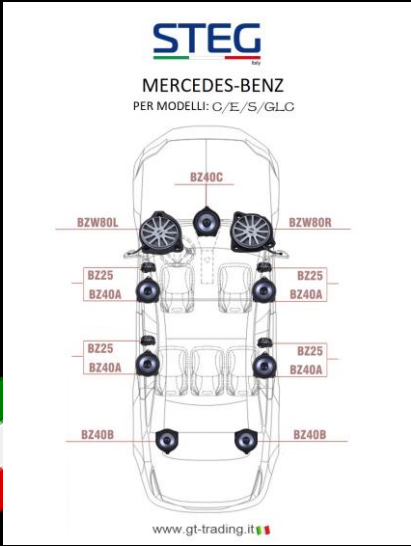
75

FERRITE

PAPER



We have made dozens of samples, hours and hours to listen and try the installation of these dedicated products in the car ... And in the end we succeeded. We have achieved the maximum in terms of Hi-end sound reproduction, in this kit for Mercedes Benz. No more changes, no more holes, just remove the original and install this Kit by STEG. Every assembly correspondence with the original will make you be amazed, so far it was unthinkable to be able to make a hi-hend speaker that would replace the original in all its complex shapes, but we succeeded ..



GTTRADING DATA	BZ25	BZ40 A-B-C	BZW80 L-R
DIMENSION (mm)	35	106	200
POWER RMS (watt)	50	80	100
POWER PEAK (watt)	70	100	110
IMPEDANCE (ohm)	4	4	2,2
FREQUENCY RESPONSE (Hz)	1500 Hz – 22 KHz	90 Hz – 15 KHz	55-1500 Hz
SENSITIVITY (dB/SPL)	91	88	90
COIL DIAMETER (mm)			
MAGNET	NEODIMIO	NEODIMIO	NEODIMIO
CONE	CERAMIC	ALUMINUM	PAPER

## STEG Italy Altoparlanti per Mercedes (Mercedes è un marchio registrato di Daimler AG) il 13.11.2017

Fahrzeugtyp					Frontsub	Porte anteriore		Porte posteriori		Center	Posteriore
Modello	Variante	Piattaforma	Anno di Costruzione	All'anno di costruzione	BZW80L/R	BZ40A	BZ40X	BZ40A	BZ40X	BZ40C	BZ40B
C	Limousine	W205	2014	>	x	x		a*	x	x	x
C	Kombi	S205	2014	>	x	x		a*	x	x	x
C	Coupé	C205	2015	>	x	a*	x	a*	x	x	x
C	Cabrio	A205	2016	>	x	a*	x	a*	x	x	x
GLC	SUV	X253	2015	>	x	x		a*	x	x	x
GLC	SUV/Coupé	C253	2015	>	x	x		a*	x	x	x
E	Limousine	W213	2016	>	x	x		a*	x	x	x
E	Kombi	S213	2016	>	x	x		a*	x	x	x
E	Coupé	C238	2017	>	x	x		a*	x	x	x
E	Cabrio	A238	2017	>	x	x		a*	x	x	x
S	Limousine	W222	2013	>	x	x		x		x	x
a*	L'apertura di Mercedes Burmester con tweeter è necessaria quando si installa il sistema BZ40A a 2 vie!										

BZW80L/R

BZW80L/R

BZ25

BZ40X

BZ40B

BZ40C

BZ40A



# BMW

DEDICATED SPEAKER

We have made dozens of samples, hours and hours to listen and try the installation of these dedicated products in the car ... And in the end we succeeded. We have achieved the maximum in terms of Hi-end sound reproduction, in this kit for BMW. No more changes, no more holes, just remove the original and install this Kit by STEG. Every assembly correspondence with the original will make you be amazed, so far it was unthinkable to be able to make a hi-end speaker that would replace the original in all its complex shapes, but we succeeded ..



GTTRADING DATA	BM8	BM45C
DIMENSION (mm)	200	200
POWER RMS (watt)	100	100
POWER PEAK (watt)	120	120
IMPEDANCE (ohm)	4	4
FREQUENCY RESPONSE (Hz)	55-1500 Hz	90 Hz – 22 KHz
SENSITIVITY ' (dB/SPL)	88	90
MAGNET	NEODIMIO	NEODIMIO
CONE	PAPER	PAPER

# NEW PRODUCT 2018

## DSP<sub>6</sub>TO<sub>8</sub>

Digital Signal Processor with 6 inputs and 8 outputs.

- **DSP resolution 64 Bit**
- **DSP power 295 MHz (1.2 billion MAC operations/second)**
- **Sampling rate 48 kHz**
- **6 input channels, 8 output channels**
- **Time-Delay with steps of 0.02 msec, insertion in cm, or msec. All settings are in real-time**
- **External control with display for presets and main settings**
- **Low-Level or High-Level Input with Auto-Sense (High-Level only)**
- **Aux input with Auto-Fading for stereo signal, speakerphone and navigation**
- **Mixer matrix to mix and match input / output channels at will**
- **SUM function (in input) for active OEM systems / sources**



### TECHNICAL SPECIFICATIONS:

**INPUT MODE:** Low Level (LL) / High Level (HL)

**INPUT IMPEDANCE:** > 15Kohm (LL) / 47ohm (HL)

**INPUT SENSITIVITY:** 0.27 V to 8.5 V (low level)

5 V to 22 V (high level)

**MAX OUTPUT SIGNAL:** 8Vrms

**THD DISTORTION:** <0.002% @ 1V rms

**FREQUENCY RESPONSE:** 10Hz ÷ 22KHz (within -0.3dB)

**CHANNEL SEPARATION:** >88dB (@ 1KHz)

**SUPPLY VOLTAGE:** 9 - 15 Volts (max. 5 sec. down to 6 Volts)

**CURRENT CONSUMPTION:** 0.4A @ 12V

**GROUND ISOLATION vs CAR BODY:** 1Kohm

**AUTOSENSE:** two operative modes (yes, HL only)

**REMOTE OUTPUT:** 50mA max.

**USB Bluetooth**, to send music from the devices and to control through its application for Apple and Android the main functions:

- **Master Volume Control**
- **Subwoofer volume control**
- **No. 8 Preset**
- **Input**

**Mute SIZE:** 185 x 120 x 43 mm (including fixing feet)





# DSP<sub>6</sub>TO<sub>8</sub>

## NEW PRODUCT 2018



# NEW PRODUCT 2018

ST DSP8

ST DSP6

upgrade  
line

The STdsp6 and STdsp8 amplifier was designed by GTTrading's R & D department to achieve maximum sound quality in OEM integration applications. Powerful management software demonstrates the ability to manage a multiamp unit in one compact device. Thanks to the innovative power stage, it is possible to obtain a power of 600 W and 800 W. With 2 digital outputs to drive another external amplifier.



# ST DSP6

upgrade  
line

- Class-D 6-channel amplifier with integrated DSP + 2 RCA outputs digitally processed, so that another amplifier can be managed in the same system creating a very powerful and multi-channel system in a small space.
- 2 x RCA OUT
- 2 x RCA INPUT
- 1 x INPUT COAX
- AUX in
- 6 Highlevel speaker input
- 1 x Optical SPDIF (12 - 96 kHz)
- 1 x Remote In.
- 1 x Remote Out.
- Black sandblasted finish.
- USB Bluetooth, to send music from the devices and to control through its application for Apple and Android the main functions:
- Master Volume Control
- Subwoofer volume control
- No. 8 Preset
- Input
- Mute

Output power (14V4):  
100W @ 4 Ohms  
180 W at 2 Ohms  
100 W x 6 to 4 ohms

Input sensitivity: (ref: Power ref.)  
From 0.27 V to 8.5 V (low level)  
From 5 V to 22 V (high level)

Xover Features:  
Subsonic filter: (20 ÷ 22000 Hz)  
Low pass filter: (20 ÷ 22000 Hz)  
Slope (dB / Oct): 6-48  
Band pass  
Q variable: 0.27 ÷ 40

DSP resolution 64 Bit  
DSP power 295 MHz (1.2 billion MAC operations / second)  
Sampling rate 48 kHz  
Operating voltage 9 - 15 Volts (up to 5 seconds down to 6 Volts)  
Phase inversion: 0 ° ÷ 180 °  
Delays (ms): 0 ÷ 25 (0.01 steps)  
Low level / high level entry  
«Auto Sense» automatic access (only in high-level mode)  
Dimensions: 220x152x40 mm  
Weight: 1250 g

**steg**  
car audio concept

GT trading



- Class-D 8-channel amplifier with integrated DSP + 2 RCA outputs digitally processed, so that another amplifier can be managed in the same system creating a very powerful and multi-channel system in a small space.
- 2 x RCA OUT
- 2 x RCA INPUT
- 1 x INPUT COAX
- AUX in
- 6 Highlevel speaker input
- 1 x Optical SPDIF (12 - 96 kHz)
- 1 x Remote In.
- 1 x Remote Out.
- Black sandblasted finish
- USB Bluetooth, to send music from the devices and to control through its application for Apple and Android the main functions:
- Master Volume Control
- Subwoofer volume control
- No. 8 Preset
- Input
- Mute

**ST** DSP8

upgrade  
line

Output power (14V4):  
100W @ 4 Ohms  
180 W at 2 Ohms  
100 W x 6 to 4 ohms

Input sensitivity: (ref: Power ref.)  
From 0.27 V to 8.5 V (low level)  
From 5 V to 22 V (high level)

Xover Features:

Subsonic filter: (20 ÷ 22000 Hz)  
Low pass filter: (20 ÷ 22000 Hz)  
Slope (dB / Oct): 6-48  
Band pass  
Q variable: 0.27 ÷ 40

DSP resolution 64 Bit  
DSP power 295 MHz (1.2 billion MAC operations / second)  
Sampling rate 48 kHz  
Operating voltage 9 - 15 Volts (up to 5 seconds down to 6 Volts)  
Phase inversion: 0 ° ÷ 180 °  
Delays (ms): 0 ÷ 25 (0.01 steps)  
Low level / high level entry  
«Auto Sense» automatic access (only in high-level mode)  
Dimensions: 220x152x40 mm  
Weight: 1250 g

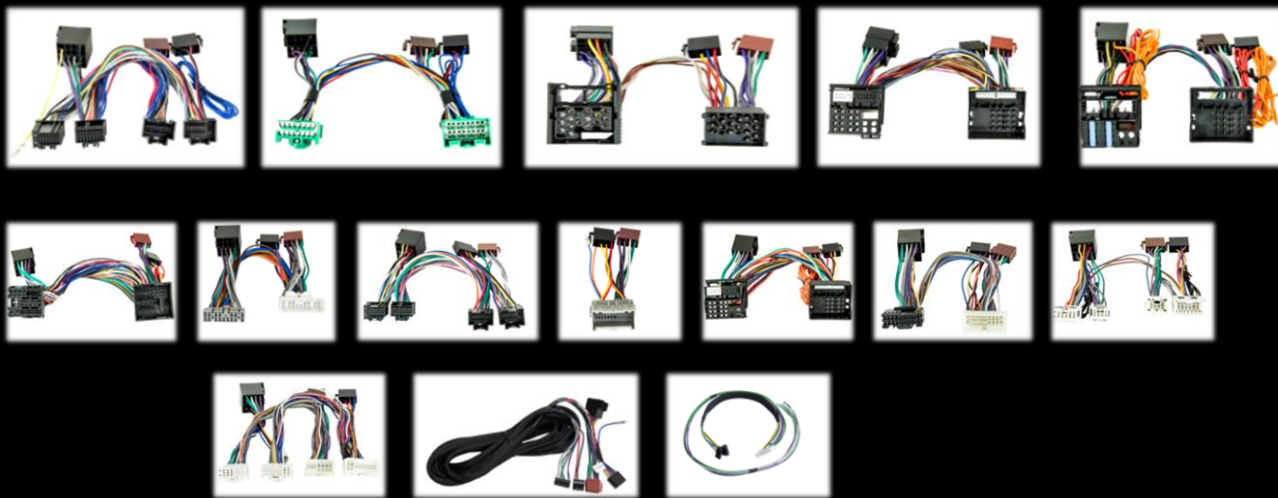
**steg**  
car audio concept

ST Trading



# PLUG&PLAY

More than 100 plug & play connector models available for different car brands.



upgrade  
line

# STEC

Italy

# NEW PRODUCT 2018

SPL SERIES



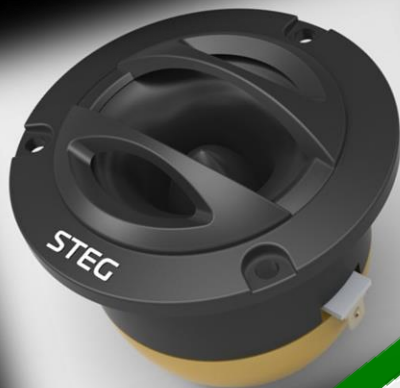
The new midrange for SPL collects the most advanced technologies developed for STEG components. All the experience of our designers has been invested in the design of these precious components, to create a synergy that can offer the highest quality sound in terms of bandwidth, dynamics, naturalness and richness of details. The new reference for their category

GTTRADING DATA	F7	F8	K7	K8
SIZE (mm)	165	200	165	200
POWER RMS (watt)	200	200	300	300
POWER PICCO (watt)	250	250	350	350
IMPEDANCE (ohm)	4	4	4	4
SENSITIVITY (dB/SPL)	93	95	94	94
DIAMETER COIL (mm)	38	38	38	38
MAGNET	FERRITE	FERRITE	FERRITE	FERRITE
CONE	CARTA	CARTA	CARTA	CARTA

# NEW PRODUCT 2018

SPL SERIES

The new Tweeter for SPL collects the most advanced technologies developed for STEG components. All the experience of our designers has been invested in the design of these precious components, to create a synergy that can offer the highest quality sound in terms of bandwidth, dynamics, naturalness and richness of details. The new reference for their category



GTTRADING DATA	TWF	TWN
POWER RMS (watt)	100	150
POWER PEAK (watt)	150	200
IMPEDANCE (ohm)	4	4
SENSITIVITY (dB/SPL)	101	105
DIAMETER COIL (mm)	25	33
MAGNET	FERRITE	NEODIMIO

# NEW PRODUCT 2018

SPL SERIES



GTTRADING DATA	ST-12	ST-15	SK-12	SK-15	SX-12	SX-15
SIZE (mm)	32	38	32	38	32	38
POWER RMS (watt)	1400	1400	2000	2000	4000	4000
POWER PEAK (watt)	1800	1800	2500	2500	5000	5000
IMPEDANCE (ohm)	2 + 2	2 + 2	2 + 2	2 + 2	2 + 2	2+2
SENSITIVITY (dB/SPL)						
DIAMETER COIL (mm)	75	75	75	75	100	100
MAGNET	FERRITE	FERRITE	FERRITE	FERRITE	FERRITE	FERRITE
CONE	CARTA	CARTA	CARTA	CARTA	KEVLAR	KEVLAR
XMAX	24MM	24MM	33MM	33MM	38MM	38MM





Gttrading Steg

[www.gt-trading.it](http://www.gt-trading.it)

GTTrading, Viale Italia N°2, Tavernelle, Colli al Metauro, (PU), 61036



**Rivenditore - Dealer**